



PERFORMANCES

MODEL	DUCT Ø	m³/h	l/s	Pa	W	dB (A)*
STANDARD / PULL CORD / TIMER / MHT						
ELPREX 100	100	221	61	208	29	41
COMFORTIMER / 2 SPEED / HT 2 SPEED						
ELPREX 100	100	221	61	15,82 / 11,10	38,8 / 8,20	41 / 15,80

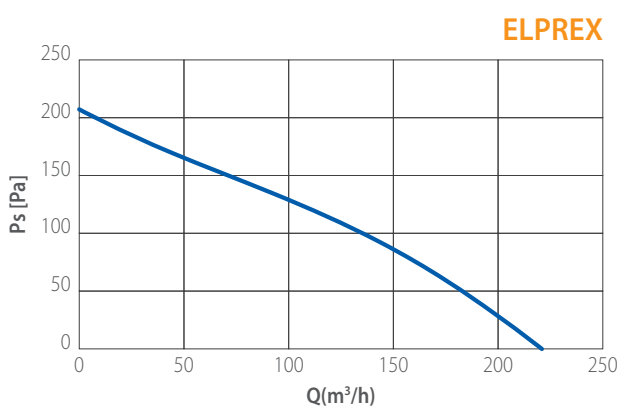
* Lp(A) measured at 3m in open field 230V-50Hz.



Comply with ErP Directive 2009/125/CE and EU Regulation 1253/2014 (Classification: Residential Ventilation Unit)

- Powerful centrifugal duct fan \varnothing 100 mm with decentralised outlet.
- Innovative design with flat front cover and lateral intake. Suitable for surface or built-in installation (wall/ceiling mounted).
- Casing for built-in installation on request
- Provided with removable filter in PP washable in dishwasher and with back-draught shutters.

CURVES



VERSIONS

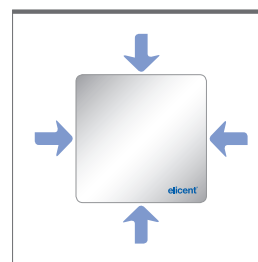
- STANDARD**
on/off through light or remote control switch.
- PULL CORD**
on/off through pull cord switch.
- TIMER**
integral electronic timer adjustable from 3 to 25 minutes.
- COMFORTIMER**
overrun timer at low speed.
- MHT**
Humidity control, adjustable from 40 to 80% of R.H.
- 2 SPEED**
24 hours running at the lowest speed.



Decentral outlet

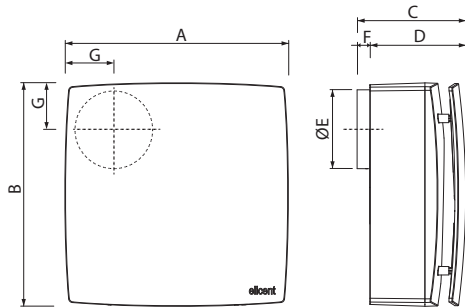


Built-in kit

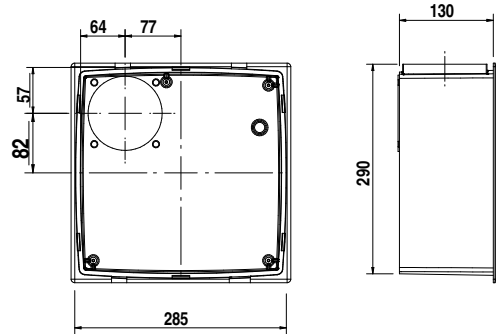


Lateral intake

DIMENSIONS (mm)



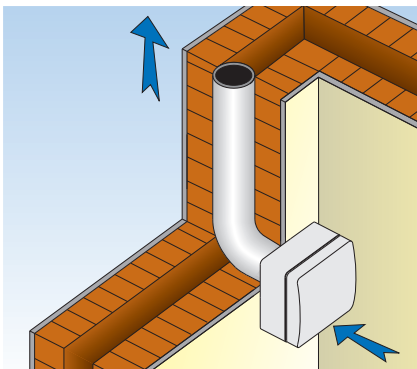
TYPE	A	B	C	D	ØE	F	G	Kg
ELPREX	280	280	135	120	99	16	58	2,8



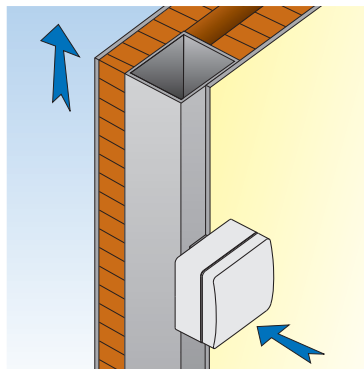
Casing for built-in installation
(to be ordered separately)
2SV0110

INSTALLATION

SURFACE

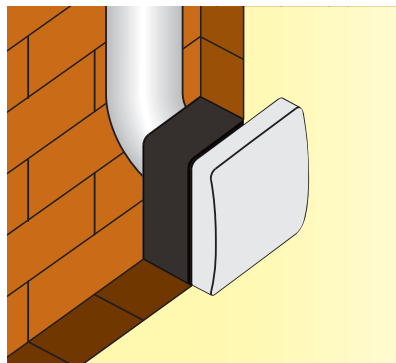
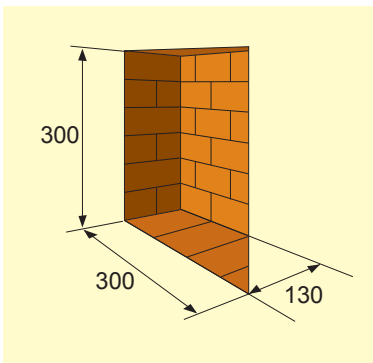


SINGLE DUCT

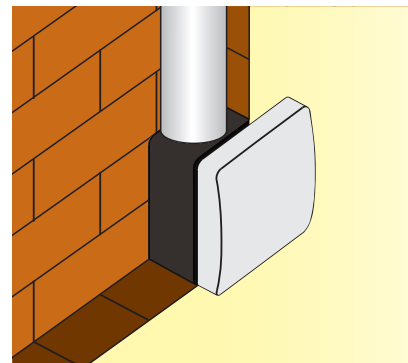


MULTIPLE DUCT

BUILT-IN



REAR OUTLET



VERTICAL OUTLET