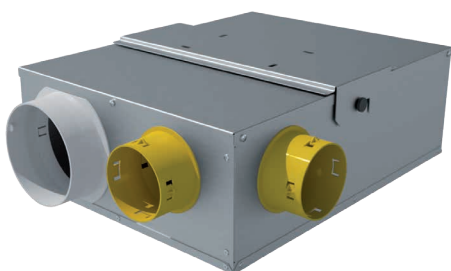




MULTIBOX

Whole-house mechanical extract ventilation Multiport centrifugal box



MODELS	CONFIGURATION	MOTOR	m³/h	l/s	W	A	dB(A)*
			max	max	max	max	max
MULTIBOX 3V (1)	3X80/125	AC	153/198/348	42,5/55/97	14/23/47,5	0,12/0,16/0,21	35
MULTIBOX CONTROL (1)	3X80/125	AC	348	97	47,5	0,21	37
MULTIBOX CONTROL+ HY	3X80/125	AC	348	97	47,5	0,21	37
MULTIBOX CONTROL+ AQS	3X80/125	AC	348	97	47,5	0,21	37
MULTIBOX EC HY	3X80/125	EC	460	128	85	0,77	37
MULTIBOX EC AQS	3X80/125	EC	460	128	85	0,77	37

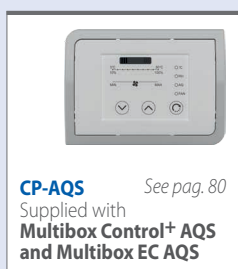
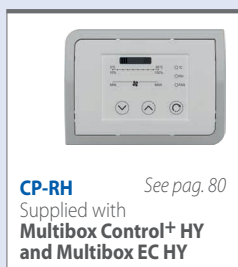
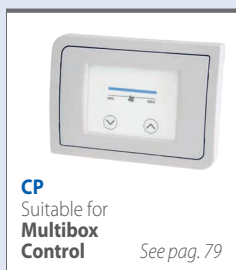
Lp(A) measured at 3 m in open field 230V-50Hz
(1) Available for extra UE markets only



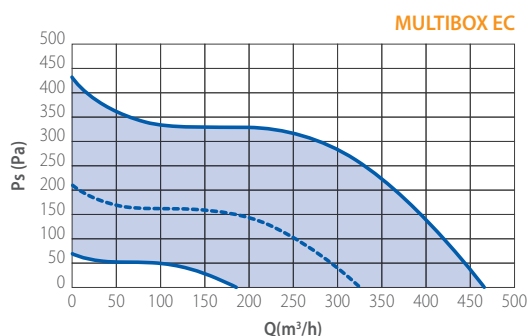
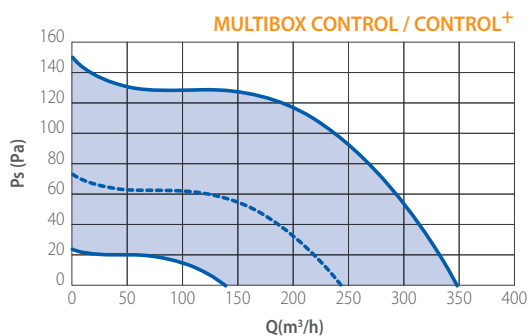
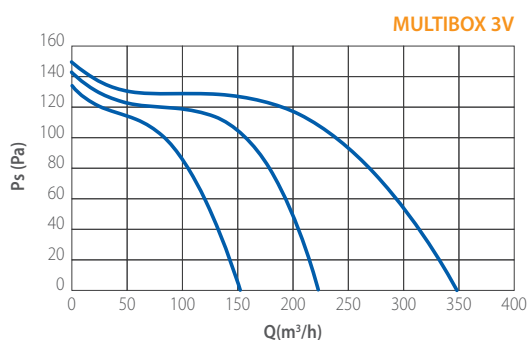
Comply with ErP Directive and UE Regulation 1253/2014 Ventilation Unit (VU)

- High energy saving
- Provided with 3xØ80 + 1xØ125 mm inlet spigots and 1xØ125mm outlet spigot
- Silent operation
- Extreme ease of installation and maintenance
- Silent operation thanks to acoustic insulation lining
- All versions speed controllable

CONTROLLERS



CURVES



DIMENSIONS (mm)

TYPE	A	B	C	D	ØE	ØF	Kg
MULTIBOX	345	437	523	174	125	80	6,2

