



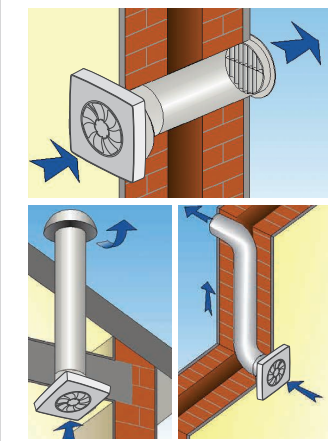
e max



Comply with ErP Directive 2009/125/CE and UE Regulation 1253/2014
Classification: Residential Ventilation Unit

- **Modular axial fan provided with 3 outlet spigots of Ø80 - Ø100 - Ø120 mm**
- Suitable for axial flow discharge towards the outside or through short ducts.
- Versatile installation on wall or ceiling.
- Very compact sizes and ultra-slim profile (33 mm without spigot), available with fixed grill.
- Equipped with an on/off service switch on board for a quick and safe disconnection from power mains.
- Integrated smart functions settable and controllable on board or via remote control according to versions.
- **Multi tension 110-240V 50-60Hz** ball bearing electronically commutated motor.
- Made of high quality antistatic technopolymer material.
- Optimized aerodynamic and fluid dynamic design.
- Impeller provided with an antivibration gasket.
- Aesthetic and smart LED on the cover with changing colors according to the ventilation modality.
- Back-draught shutters available on spigots (Ø 100 and 120).
- In compliance with EN 60335-2-80, EMC Directive 2014/30/UE, LVD Directive 2014/35/UE.

INSTALLATION



INCLUDING

REMOTE CONTROLLER INCLUDED WITH e max PLUS RC



Universal modular axial fan

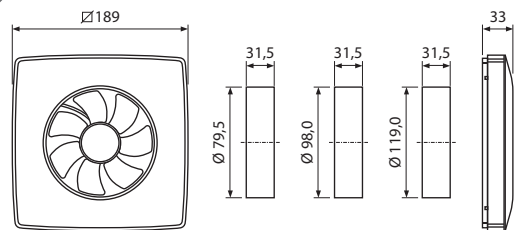


PERFORMANCES

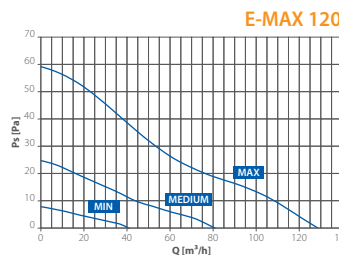
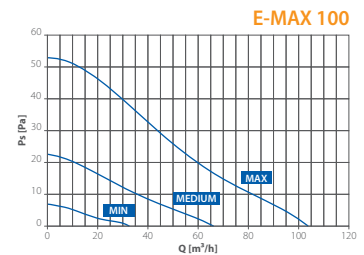
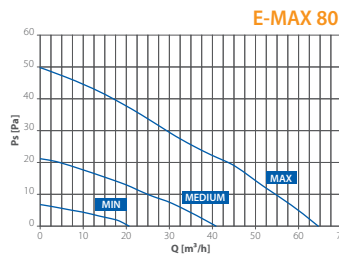
OUTLET DIAMETER	SPEED	A	POWER	AIR FLOW	l/s	PRESSURE	LpA@3m
			W	m³/h		Pa	dB(A)*
80	Max	0,034	3,6	65	18	50	29
	Medium	0,020	1,9	41	11	21	19
	Min	0,015	1,1	21	6	7	14
100	Max	0,034	3,6	104	29	53	30
	Medium	0,020	1,9	67	19	23	20
	Min	0,015	1,1	33	9	7	14
120	Max	0,035	3,8	129	36	59	28
	Medium	0,020	1,9	81	22,5	25	17
	Min	0,014	1,1	41	11	8	14

* Sound pressure calculated @ 3m in free field - Performance measured at 230V / 50 Hz

DIMENSIONS (mm)



CURVES



VERSIONS

STANDARD

On/Off via control switch (light or remote)

2V DT - 24 hours running at low speed (selectable between 2 at installation). Speed boosts to maximum via control switch (light or remote). The maximum speed is provided with a timer (adjustable from 0 to 30 minutes) which activation can be delayed up to 2 minutes to avoid unnecessary night-time operation at the highest speed. (DT/Delay Timer function, selectable at installation).

MHY - 24 hours running at low speed (not selectable). Speed boosts to maximum automatically or manually.

- **Automatically** via humidistat (adjustable from 45 to 85% of R.H). The fan speed increases/decreases according to the humidity level detected above the pre-selected threshold. It then switches back to the minimum speed when the humidity level goes beneath the pre-selected threshold and once concluded the pre-selected overrun via timer (adjustable from 0 to 30 min).

• **Manually** via control switch (light or remote). The fan boosts to maximum via the manual switch and goes back to the low speed once concluded the pre-selected overrun via timer (adjustable from 0 to 30 min).

PLUS - 24 hours running with minimum and maximum speeds both adjustable.
The operation is similar to the MHY version. In addition, the fan is provided with the DT/Delay Timer function (see E max 2V DT).

PLUS RC - This version is similar to the e max Plus one. In addition, it is supplied with a remote control from which it is possible to set 2 additional functions:

- an intermediate speed which will adjust automatically according to the minimum and maximum speeds selected.
- a sleep mode function that excludes the timer and humidistat functions for a period of 8 hours, preventing night disturbance.