

Comply with ErP Directive 2009/125/CE and EU Regulation 327/2011
Classification FAN



PERFORMANCE

MODELS	m ³ /h	l/s	W	A	dB(A)* at 3 m	
					Lw	Lp
AXM 100	160 / 250	44 / 69	35	0,1 / 0,18	55	39
AXM 125	180 / 300	50 / 83	36	0,1 / 0,18	54	44
AXM 150	340 / 480	94 / 133	70	0,27 / 0,36	66	50
AXM 160	340 / 480	94 / 133	70	0,27 / 0,36	65	50
AXM 200	720 / 820 / 910	200 / 228 / 253	75	0,24 / 0,27 / 0,34	58	43

* Lp(A) measured at 3m in open field 230V-50Hz

- Duct fans, entirely made of polypropylene
- For direct installation between ducts
- Easy inspection and maintenance by simply opening the clamp and removing the fan
- Helicocentrifugal mixed flow impeller with downstream stator. Made in ABS
- Asynchronous motor, 2 and 3 speeds, depending on model
- IP 44 Protection, Motor Class B
- Robust motor with ball bearings, maintenance-free
- 220 - 240 V at 50 Hz
- Speed control using phase control or transformer (exception: Version with timer)
- Thermal overload protection as a standard feature
- Externally fitted terminal box with cable entry grommet

BENEFITS

- High efficiency resulting in minimum energy costs.
- Quiet running thanks to optimized aerodynamics and guide vanes.
- Easy installation: pre-installed mounting brackets and external connection box.
- Simplified maintenance by loosening the clamps (no need to handle the duct).
- Versatile installation.

VERSIONS



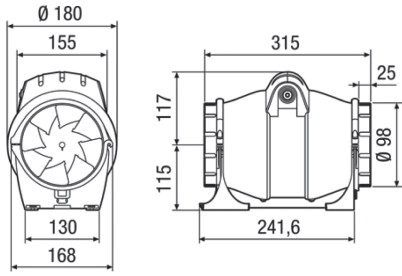
TIMER





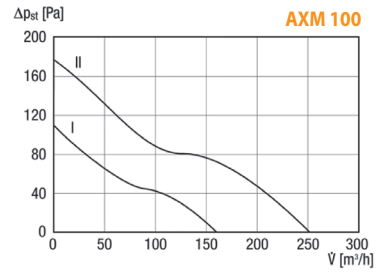
AXM 100

DIMENSIONS (mm)



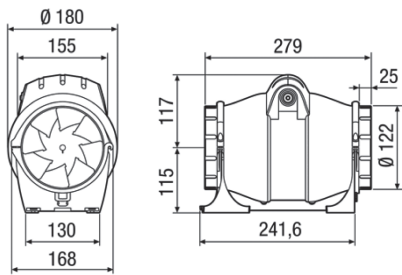
Kg. 2,1

CURVES



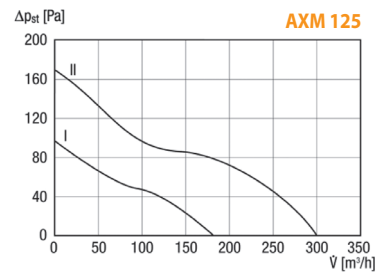
AXM 125

DIMENSIONS (mm)



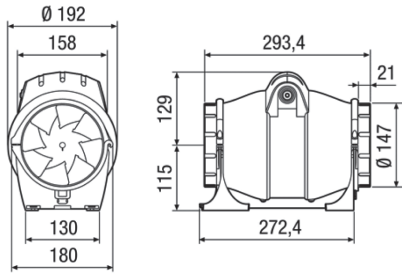
Kg. 2,1

CURVES



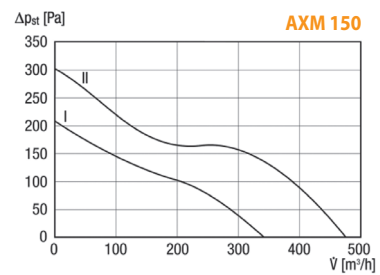
AXM 150

DIMENSIONS (mm)



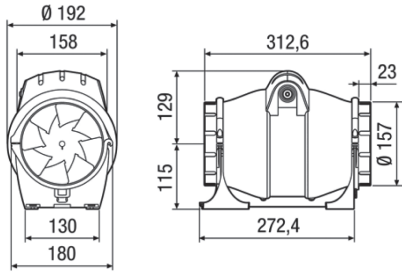
Kg. 3,2

CURVES



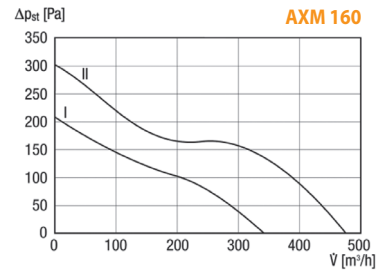
AXM 160

DIMENSIONS (mm)



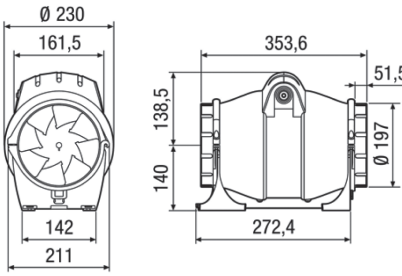
Kg. 3,2

CURVES



AXM 200

DIMENSIONS (mm)



Kg. 4,5

CURVES

