



ELIX EC 2V

Centrifugal duct fan
Linea Design EC versions

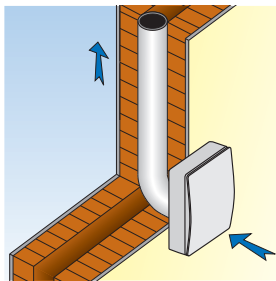


Comply with ErP Directive 2009/125/CE
and EU Regulation 1253/2014
Classification: Residential Ventilation Unit

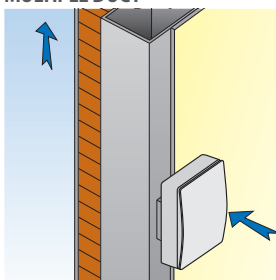
- Energy efficient EC motor
- Provides low level continuous ventilation to control condensation
- Choice of 2 low speeds at installation
- For wall or ceiling installation
- For any domestic wet room
- Low noise levels and running costs
- Exhausts directly to the outside or through long lengths of ducting (up to 15m)
- Runs continuously at pre-selected choice of two speeds (fixed at installation).
- Anti-vibration gasket.
- Easily removable, washable polypropylene filter.
- Energy saving ventilation.
- Extremely low running costs.
- Low carbon footprint.

INSTALLATION

SINGLE DUCT



MULTIPLE DUCT

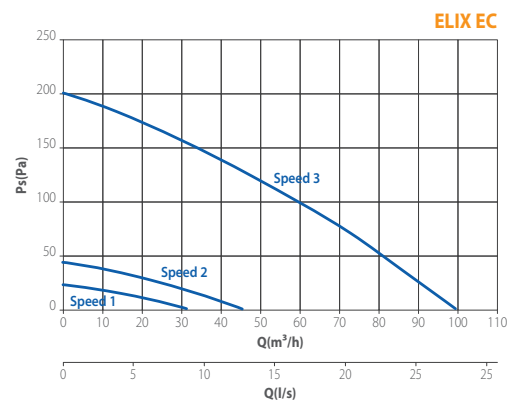


PERFORMANCE

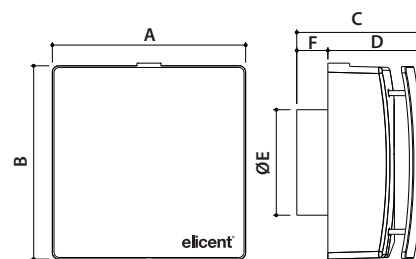
MODEL	DUCT Ø	m³/h	l/s	Pa	W	dB (A)*
ELIX 100 EC 2V	100	100 / 46 / 32	28 / 13 / 9	200 / 44 / 23	15 / 2,4 / 1,6	37 / 18 / 16
ELIX 100 EC 2V DT	100	100 / 46 / 32	28 / 13 / 9	200 / 44 / 23	15 / 2,4 / 1,6	37 / 18 / 16
ELIX 100 EC 2V HDT	100	100 / 46 / 32	28 / 13 / 9	200 / 44 / 23	15 / 2,4 / 1,6	37 / 18 / 16

* Lp(A) measured at 3m in open field 230V-50Hz.

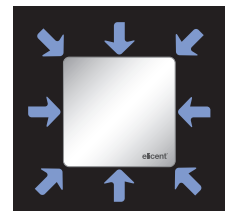
CURVES



DIMENSIONS (mm)



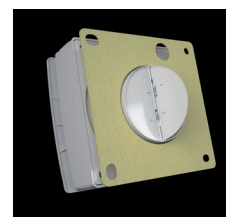
MODEL	A	B	C	D	E	F	Kg
ELIX 100 EC 2V	180	180	116	87	99	29	2,6



Lateral intake on the whole perimeter



Sliding filter



Antivibration gasket

VERSIONS

EC 2V DT - 24 hours running at low speed (selectable between 2 at installation). Speed boosts to maximum via control switch. The maximum speed is provided with a timer (adjustable from 0 to 30 minutes) which activation can be delayed up to 2 minutes to avoid unnecessary night-time operation at the highest speed. (DT option, selectable at installation).

EC 2V HDT - 24 hours running at low speed (selectable between 2 at installation). Speed boosts to maximum automatically or manually:
- automatically via humidistat (adjustable from 40 to 90% of R.H). The fan switches back to the low speed when the humidity level goes beneath the pre-selected threshold and once concluded the pre-selected overrun via timer (adjustable from 0 to 30 min).
- manually via control switch (remote or pull cord). The fan switches back to the low speed once concluded the pre-selected overrun via timer (adjustable from 0 to 30 min). The activation of the timer can be delayed up to 2 minutes to avoid unnecessary night-time operation at the highest speed. (DT option, selectable at installation).

All EC models (100 2V, 2V DT, 2V HDT) are also available in SELV version, low voltage 12V.