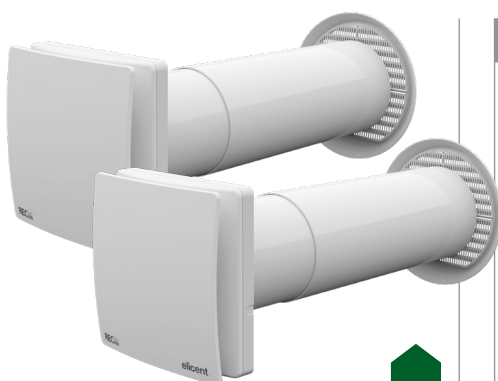




REC duo

Decentralized Heat Recovery Unit



Coupled installation in a single room or 2 separate rooms



Comply with ErP Directive 2009/125/CE and EU Regulation 1253/2014
Residential Ventilation Unit

FEATURES

- Very high efficiency decentralized HRU with heat recovery up to 90%.
- Ideal for residential applications and in any ambient where it is necessary to ensure a constant thermal comfort both in the summer and in the winter.
- Suitable for any kind of rooms.
- A coupled installation is recommended to optimize the system efficiency, in a single room or separate rooms.
- Direct exhaust through walls with thickness from 300 to 500 mm (adaptable to other wall thickness from 220 to 1000 mm: see section Dimensions).
- Suitable for conveying air to a max. temperature of 40°C.
- Stylish and ultra-slim front cover. Very compact dimensions.
- Provided with filters G3 class both in intake and in extract, easily removable and washable.
- Free-cooling function.
- EC brushless motor.
- Comply with EN 60335-2-80, LVD 2014/35/EU, EMC 2014/30/EU.
- IPX4
- CE marked

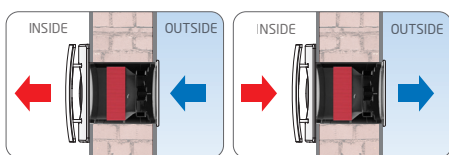
Energy class A

- Thermal efficiency up to **90%**
- Ø100
- Easy Installation and maintenance:
 - Magnetic coupling/uncoupling of the unit
 - External grille with net, installable from the inside
 - Telescopic duct
- Wireless communication (REC duo 100 PLUS RC)
- Drastic solution to humidity and condensation problems

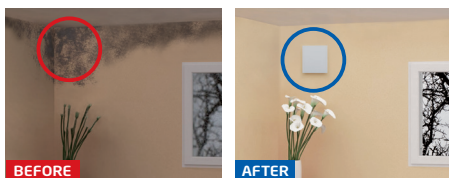
OPERATION



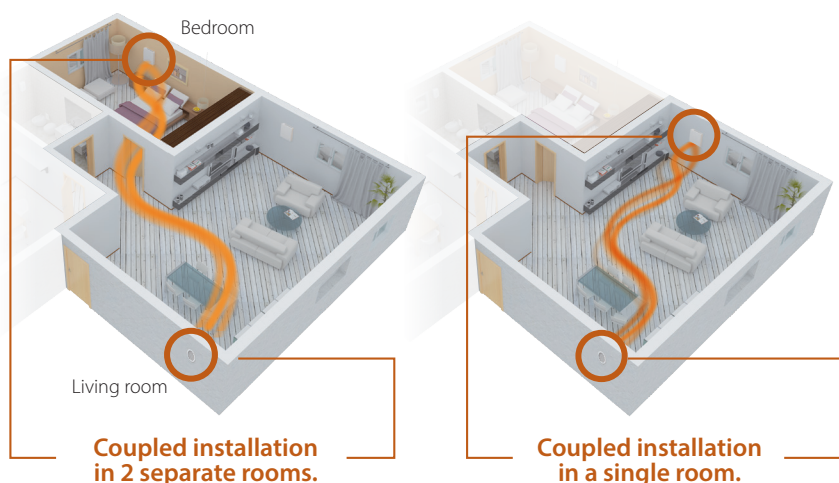
REC Duo 100 is a "push-pull" HRU with reverse flow. It is provided with a ceramic heat exchanger that accumulates the heat from the extracted air during the "pull" cycle and releases it to the new fresh air during the "push" cycle.



REVERSE FLOW **60 SECONDS**



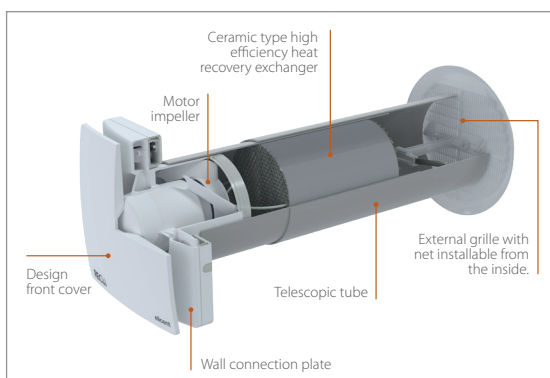
EXAMPLES OF INSTALLATION



PERFORMANCE

MODEL	DUCT	WALL THICKNESS	AIR FLOW min / max only exhaust	V AT 50 HZ.	W min / max only exhaust	dB(A)*
	Ø (mm)	min. / max (mm)	m³/h			Lp
REC Duo 100 - 100 MHY - 100 Plus RC	107	300 - 500	12 / 30 / 40	230	1 / 2,8 / 3,5	15 / 29

* at 3 m in open field



MAGNETIC COUPLING UNCOUPLING OF THE UNIT TO THE CONNECTION PLATE





MODELS & OPERATION



REC DUO 100

24 hours running in push-pull modality at low speed (selectable between 2 at installation).

The unit switches to the extraction operation modality when speed boost is activated through remote control switch or RLS controller (available as accessory). The maximum speed is provided with a timer (adjustable from 0 to 30 minutes). Once concluded the overrun via timer, the fan automatically switches back to the push-pull operation modality at low speed.



REC DUO 100 MHY

24 hours running in push-pull modality at low speed (selectable between 2 at installation).

The unit switches to the extraction operation modality when speed boost is activated, manually or automatically: **Manually** via control switch or RLS controller (available as accessory). The maximum speed is provided with a timer (adjustable from 0 to 30 minutes). Once concluded the overrun via timer, the fan automatically switches back to the push-pull operation modality at low speed.

Automatically via humidistat (adjustable from 45 to 85% of R.H). The fan speed increases/decreases according to the humidity level detected above the pre-selected threshold. It then switches back to the push-pull operation modality at low speed when the humidity level goes beneath the pre-selected threshold.

RLS

Available as accessory for REC DUO 100 and REC DUO 100 MHY



- On-Off
- Boost speed



REC DUO 100 PLUS RC

24 hours running in push-pull modality at low speed (adjustable by the end-user).

Boost speed is available in push-pull modality and turns on automatically via humidistat (adjustable from 45 to 85% of R.H) and increases/decreases progressively according to the detected humidity level.

In case of a persistent and high concentration of humidity, the unit automatically switches to the extraction operation modality. It then switches back to the push-pull operation modality at low speed when the humidity level goes beneath the pre-selected threshold. The unit is supplied with a remote controller for the selection and activation of advanced comfort ventilation functions.

REC Duo 100 PLUS RC is supplied with a remote controller through which selecting the speed and managing the following operation modalities:

0 - On/off

1 - Push-pull operation modality

24 hours reverse flow running at the selected speed

2 - Speed 1 - Low speed set up

3 - Speed 2 - Low speed set up

4 - Boost speed with timer (extraction mode only)

5 - Sleep mode

the operation at low speed is frozen for 8 hours to ensure high acoustic comfort during the night. The function can be unblocked at any time by pressing any button (except button 0).

6 - Flow control

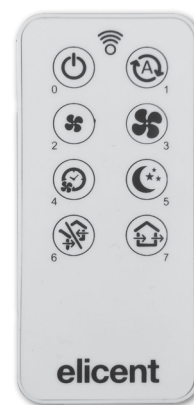
operation in intake or extract mode only.

Press once: extraction mode

Press twice: intake mode

7 - Free-cooling mode: air exchange without heat recovery

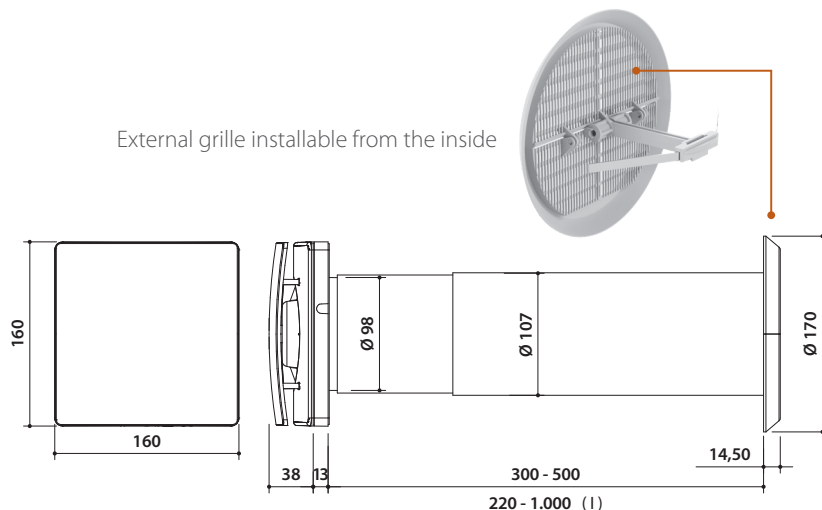
No reverse flow. Press once: the reverse flow stops and the fans go on running at the current flow. Press twice: all fans reverse their flow and go on running at the new selected flow.



Led signal:

any time a button is pressed, a led switches on the remote controller to indicate that the signal has been received.

DIMENSIONS (mm)



External grille installable from the inside

(I)

■ For walls with thickness > 500 mm:

It is necessary to use the telescopic duct available as accessory

Cod. 2KT0014



■ For wall thickness between 220 and 300 mm:

it is necessary to cut the duct and to use the external grille MFE, available as accessory

Cod. 2GE2002

