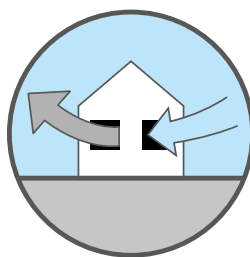




  Dal 1970 la ventilazione made in Italy



Residential & Commercial **Extract Ventilation**





Clear as the air

The indoor air quality is essential to ensuring good quality of life. We have passionately worked for over 45 years with the objective of manufacturing not simply fans, but innovative, technologically advanced, environmentally friendly and human health focused products.



Strong as our prospects

The path followed by our company is part of the history of a large German industrial group, which started as early as 1928, the year when Christian Maier set up Maico Elektroapparate. Since then, the group has been able to build up a well established industrial reality and to acquire the technological and commercial know-how which has allowed it to become one of the top names in the ventilation industry. In the last few years, the group focus to grow on a global level has been speeded up and materialised with important investments in emerging markets: a culturally exciting and highly promising scenario.

Green as the future

Problems like global warming and atmospheric pollution affect us not just as a company working with air but also as human beings. For this reason all our efforts aim to investments, industrial process and products that lead the way in terms of efficiency, cost-effectiveness and environment respect. Many are the rules today that show an ever increasing desire to breathe clean air, from the Kyoto protocol to the many building regulations; we are proud to accept the challenge because we strongly believe that we must work together to win the battle for a clean environment for all. Why not say it, **"it's our great aspiration!"**



  Dal 1970 la ventilazione made in Italy

For more than 45 years our product range has followed a seamless thread: from the first fans, Elicent policy to combine design, practicality and advanced technology is easy to see. The result is an outstanding Italian product which has earned wide recognition around the world. All our production is 100% made in Italy, in Lonato del Garda (Brescia) where we design and produce all the fans that are then exported in more than 70 countries.

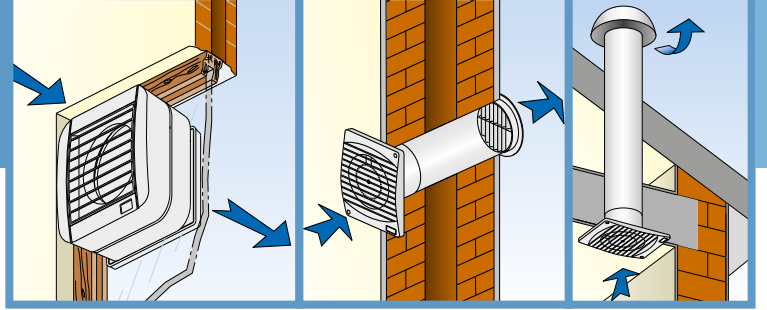


Our production is CE certified and compliant with ErP Directive 2009/125/CE and EU Regulations 327/2011 and 1253/2014.



AXIAL FANS

Axial fans are designed to extract large volumes of low pressure air directly to the outside or over short duct lengths. They can be suitable for wall, window, duct and ceiling application.

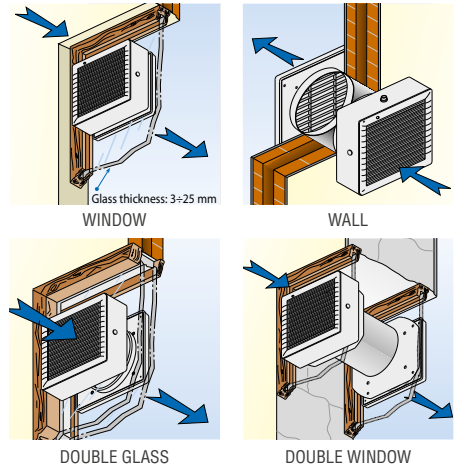


Window installation



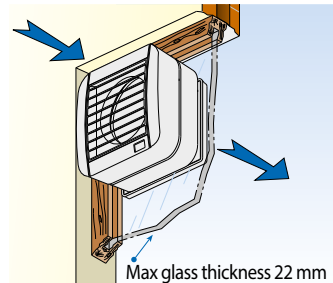
VITRO

- Complete range: 6, 9, 12 inches
- Manual or automatic versions, potentiated or low capacity
- 9" and 12" (automatic versions) suitable for reverse running.
- Ideal for commercial environments.
- Airflow up to 1.400 m³/h.
- Accessories for double window, double glazed window and wall installation upon request.



ECOWIND

- 3 sizes: Ø 100, 120, 150 mm
- Automatic shutter (with neon running light)
- Supplied with assembled kit for window installation

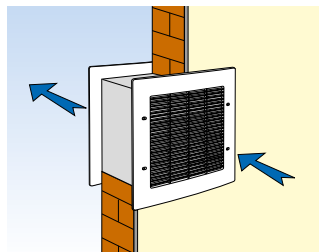


Wall installation



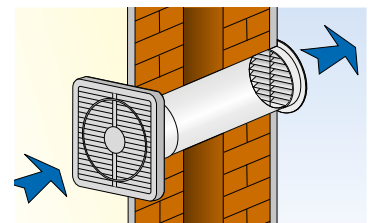
BUILT-IN

- Extract/Intake models available in 2 sizes: 9" and 12" (with same wall hole sizes)
- Built-in 9" available in Low capacity version
- High efficiency (airflow up to 1.630 m³/h)
- Ideal for commercial environments.



JOLLY

- Complete range ø 100, 120, 150 mm.
- Airflow up to 320 m³/h.
- Back draught shutters upon request.
- Compact and easy installation.





Wall and ceiling installation



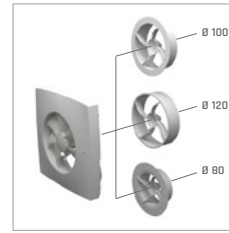
The innovative and stylish universal fan:

- Multi diameter: the fan can be mounted on ducts with Ø 80, 100 and 120 mm
- Integrated smart functions, settable and controllable on board or via remote control
- Multi tension: 110-240V 50/60 Hz
- Very low consumption: 1 - 3,8 W
- 12 V highly performant DC motor
- Very silent innovative motor impeller: 15 - 29 dBA
- Ultra slim profile, available with fix grill and black finishing



Detachable motor-impeller

The frame is featured with a quick connection in order to facilitate and speed up the fan installation or maintenance without the use of tools.



Interchangeable outlet spigots

e-max is supplied with 3 interchangeable spigots of Ø 80, 100 and 120 mm, replaceable with a click, for an easy and quick installation on any standard air duct sizes.



Integrated smart functions and service switch

e-max is provided with different integrated smart functions which optimize its operation and reduce the energy consumption. Integrated service switch for easy maintenance.



@-SMILE



- Unique model Ø100 mm with high aeraulic performance: airflow 90 m³/h – 71 Pa
- Low consumption (max 7,5 W) and silent running.
- Suitable for medium length ducting
- Ball bearing motor
- Back-draught shutters



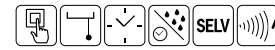
ELEGANCE



- Complete range Ø 100, 120, 150 mm.
- Airflow up to 315 m³/h
- Innovative design with front cover and lateral intake.
- Ball bearing motor
- Model Elegance EC 2V with EC brushless motor in Ø100 mm
- Back-draught shutters



@-STYLE



- Complete range Ø 90,100, 120, 150 mm with neon running light.
- Model e-style Trend available in 100, 120, 150 mm (with no neon running light). Airflow up to 295 m³/h
- Back draught shutters on models 100, 120, 150



MINISTYLE



- Unique model Ø100 mm, ideal for small premises
- Easy to install and extremely compact (front cover 17 mm, height and width 14 mm)
- Airflow 90 m³/h
- Back draught shutters on request



ECOLINE



- Complete range Ø 100, 120, 150 mm
- Available with fixed grilled (ECO GF), Gravity shutter (ECO GG) and Automatic shutter (ECO A)
- Airflow up to 320 m³/h



MURO



- Complete range Ø 100, 120, 150 mm
- Model MURO 100 A with electric opening of the grille.

TUBO

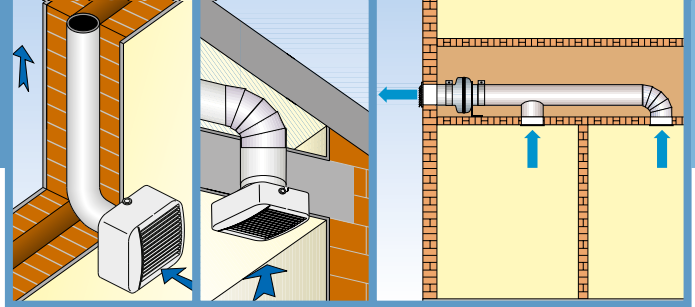


- Complete range 100, 120, 150 mm
- Suitable for intake / extract ventilation
- Ideal for conveying air between two separate rooms
- Invisible and efficient: (no fan into the room)
- Airflow up to 320 m³/h
- Metal or Technopolymer versions



CENTRIFUGAL FANS

Centrifugal fans are designed to extract air over long distances and to overcome the resistance of long length and curved ducting. They are suitable for wall, ceiling, roof installation, in single or multiple ducts.



Duct installation

ELIX



- Unique model for duct Ø 100 mm with central outlet.
- Innovative design with flat front cover and lateral intake.
- Airflow 97 m³/h - Pressure 151 Pa
- Available with EC brushless motor
- Sliding filter in PP, removable and washable
- Back draught shutters



ELPREX



- Powerful centrifugal duct fan Ø 100 mm with decentralised outlet.
- Innovative design with flat front cover and lateral intake.
- Suitable for surface or built-in installation (wall/ceiling mounted).
- Airflow 221 m³/h - Pressure 208 Pa
- Casing for built-in installation on request
- Removable and washable filter in PP
- Back draught shutters



FLUX



- Centrifugal duct fans with central outlet
- 2 models: 100 and 250, Ø 100 and 120 mm
- Max airflow 232 m³/h - max pressure 195 Pa



RADIA



- Powerful centrifugal fan with decentralised outlet
- 3 models for duct Ø 100 mm
- Airflow up to 220 m³/h - Pressure up to 277 Pa
- Back draught shutters
- Removable and washable filter



Outdoor installation

EXT



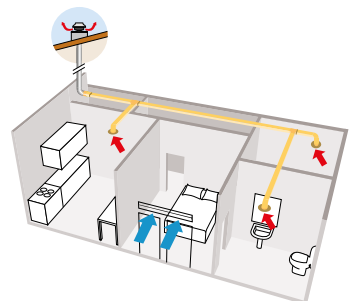
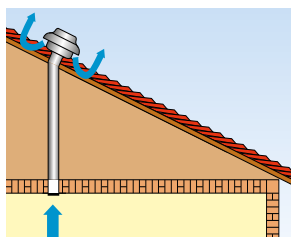
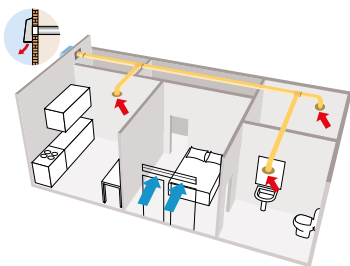
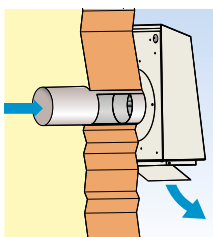
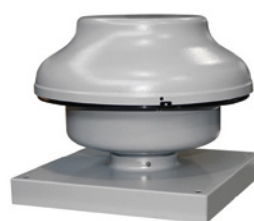
- 8 models Ø100 to 200 mm
- Ideal in environments where aesthetics, space or noise level are of concern
- Easy and cost-effective solution for a centralised ventilation requirement
- Airflow up to 908 m³/h - Pressure up to 609 Pa
- Ball bearing motor
- AC or EC versions



MRF



- 7 models Ø100 to 315 mm
- Compact sizes, available with or without square roof curb.
- Easy and cost-effective solution for a centralised ventilation requirement.
- Airflow up to 1222 m³/h - Pressure up to 838 Pa
- Ball bearing motor
- AC or EC versions



TIRAFUMO



- Ideal for improving the draught of residential fireplaces
- Suitable for chimneys with a section of max 150 x 150 mm and air temperature of max. 200°C in continuous running
- Easy installation (just Plug & Play). Supplied with counterbase to wall-up, plug-in junction box with service switch, eyebolts and electronic speed control R15.
- Airflow 850 m³/h - Pressure 190 Pa
- Steel or copper versions.



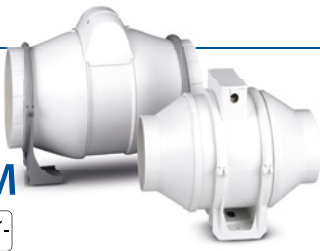
ELIAIR

- Rotating chimney cowl - circular base - designed to eradicate downdraught, whilst the rotating action assists ventilation
- Circular base on double ball bearings
- Made of stainless steel antimagnetic AISI 304 (Din 1.4301)
- Sizes from 80 to 600 mm



In-Line installation

AXM



- Mixed-flow in-line duct fans in PP
- Asynchronous ball bearing motor, 2 and 3 speeds, depending on model.
- 5 sizes: 100, 125, 150, 160, 200 mm
- Airflow up to 910 m³/h - Pressure up to 300 Pa

AXC



- 11 models Ø100 to 315 mm.
- Airflow up to 2.350 m³/h - Pressure up to 902 Pa.
- Easy and cost-effective solution for a centralized ventilation requirement.
- Wall fixing brackets included.
- Ball-bearing motor. Backward curved blades
- AC or EC versions

AXC TP



- 4 models with Ø from 100 to 160 mm
- Lightweight and silent
- Made in self-extinguishing V2 technopolymer



MICROBOX



- Super-slim centrifugal box Ø 125 mm (1 to 3 spigots Ø 80 mm)
- AC or EC versions
- Max airflow 310 m³/h
- All models speed controllable



MULTIBOX

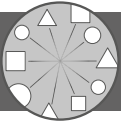


- Super-slim centrifugal box Ø 125 mm (1 to 3 spigots Ø 80 mm)
- AC or EC versions
- Max airflow 460 m³/h
- All models speed controllable

AXR



- Centrifugal in-line fans for RADON mitigation
- Housing in self-extinguishing V2 technopolymer
- Tight sealing
- 4 sizes: 100, 125, 150, 160 mm
- Airflow up to 450 m³/h



SENSORS - CONTROLLERS - ACCESSORIES

SENSORS



R10 TIMER Remote timer

- Electronic timer, adjustable from 3 to 25 minutes

R10 Sensors

- Surface or built-in installation
- Suitable for home automation systems
- Max load 4A,
- 110 x 80 x 42 mm



R10 HY Remote Humidity Sensor

- The sensor automatically switches ON/OFF the fan according to the detected level of relative humidity, adjustable from 40 to 90%.



R10 P.I.R Remote Passive Infrared Sensor

- The fan goes on any time the sensor detects a human presence in the room
- Provided with integral delay timer adjustable from 3 to 25 minutes, which keeps the fan running for the pre-set period after the room is vacated
- Ideal solution for public toilets.



CO2 Sensor

The sensor automatically switches the fan on when it detects a CO₂ concentration in a range of 500 to 2000 ppm.

SPEED CONTROLLERS

Infinitely variable electronic controllers by potentiometer



R10
1A



R15
1,5A



RV1
1 - 4A

SPEED CONTROLLERS WITH TRANSFORMER



RLS 2V
2 speeds



RLS 3V
3 speeds



RVS
5 speeds
0,5A



RVS1
6 speeds
1,5A

REVERSIBLE SPEED CONTROLLERS



RVS/R
3 speeds
0,5A



RVS/R
5 speeds
0,5A



RVS/R PLUS
6 speeds
1,5A

A wide range of ventilation accessories is available.

Guidelines for a correct ventilation

Selecting the correct fan

Extraction is always made from humid/polluted premises:

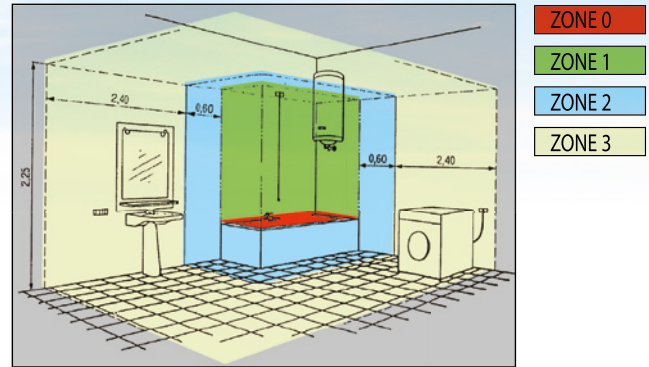
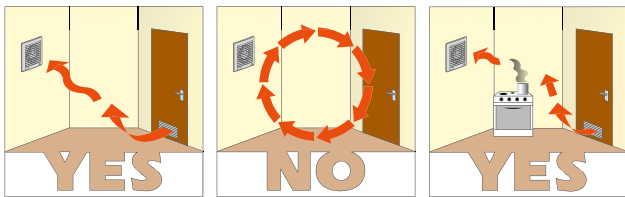
kitchens, laundries, toilets, bathrooms, bars... To choose the fan airflow needed for a specific application, use the following calculation:

$$\text{Airflow} = \text{volume of the room in m}^3 \times \text{number of air changes per hour}$$

Type of room	Air change per hour
Kitchens	6 - 10
Bathrooms and shower rooms	8 - 12
Toilets	8 - 10
Public toilets	10 - 15
Restaurants and bars	10 - 12

Setting the fan correctly

- Fans should always be mounted in the furthest window, wall or ceiling from the main source of air replacement to ensure airflow across the room and avoiding short circuiting of air movement.
- Air replacement should be ensured via internal grilles in the door, ceiling or wall.
- Fans should be located as high as possible in the window or wall nearest to smells or streams but not directly above eye-level grilles or cooker hoods.



- If installing in a bathroom, the fan must be located where it cannot be touched by a person. Elicent range of 12 Volt SELV fans (Safety Extra Low Voltage) can be installed in zone 1. Fans with IPX4 protection can be installed in zone 2. Fans with an IPX2 protection must be installed in zone 3.

Choosing the right Elicent version

✔ IDEAL SOLUTION
✔ SUITABLE
✘ NOT RECOMMENDED

TYPE OF PREMISE	STANDARD	PULL CORD SWITCH	TIMER/ COMFORTIMER	MHT / COMFORT HYGRO	MHY SMART	PIR	2 SPEED
TOILET	✔	✔	✔	✔	✘	✔	✔
PUBLIC TOILET	✔	✔	✔	✔	✘	✔	✔
BATHROOM	✔	✔	✔	✔	✔	✘	✔
SHOWER ROOM	✔	✔	✔	✔	✔	✘	✔
KITCHEN	✔	✔	✔	✔	✔	✘	✔
LAUNDRY	✔	✔	✔	✔	✔	✘	✔
OFFICE	✔	✔	✔	✘	✘	✘	✔

Operation

STANDARD version
Light/remote control switch.

PULL CORD switch

TIMER
Integral electronic timer adjustable from 3 to 25 minutes.

COMFORTIMER
Microchip Timer version adjustable from 3 to 25 mn with overrunning at low speed for an energy saving up to 64% compared to a standard timer version. The low speed guarantees increased silence and energy saving though maintaining a fully satisfying exhausting efficiency. Version particularly suitable for hotels, hospitals, private homes and for all those applications where silence is a must.

MHT humidity control
Integral humidity control adjustable from 40 to 80% of R.H.

MHY Smart humidity control
Provided with the latest microchip technology. Operation: automatic and progressive increase / decrease of the motor speed according to the percentage of R.H.

COMFORT HYGRO
Combines to Comfortimer technology a microchip humidity sensor adjustable from 40 to 80% of R.H.

P.I.R.
Passive infra-red sensor with integral adjustable timer from 3 to 25 minutes.

12 VOLT
Low voltage version.

2 V
Double speed version (24 hours running at the lowest speed).

EC MOTOR
High efficiency, electronically controlled, brushless motor.



The headquarter of Maico Italia Spa, Lonato del Garda (Brescia), Italy



Maico Italia S.p.A.

Via Maestri del Lavoro, 12 - 25017 Lonato del Garda (Brescia) Italia

Tel. +39 030 9913575 - Fax +39 030 9913766

sales@maico-italia.it / www.maico-italia.it



Member of:



We reserve the right to modify any technical data without notice.
Different voltage and frequency upon request.

All trademarks are the property of Maico Italia Spa - All rights reserved.

Follow us:

